



## RCAP Technical Assistance for Tribal Communities under Environmental Finance Center (EFC) Funding

### The Rural Community Assistance Partnership Incorporated (RCAP)

RCAP is a national network of nonprofit organizations that works across every U.S. state, the U.S. territories, and Tribal lands and has existing relationships with ~200 federally recognized Tribes. RCAP is a National EFC and looks forward to utilizing our trusted existing Tribal relationships and working in partnership with the Indian Health Service (IHS) to help other Tribal communities with their water, wastewater, and infrastructure funding needs including those with centralized systems as well as those on private wells/septic with potential public and environmental health risks.

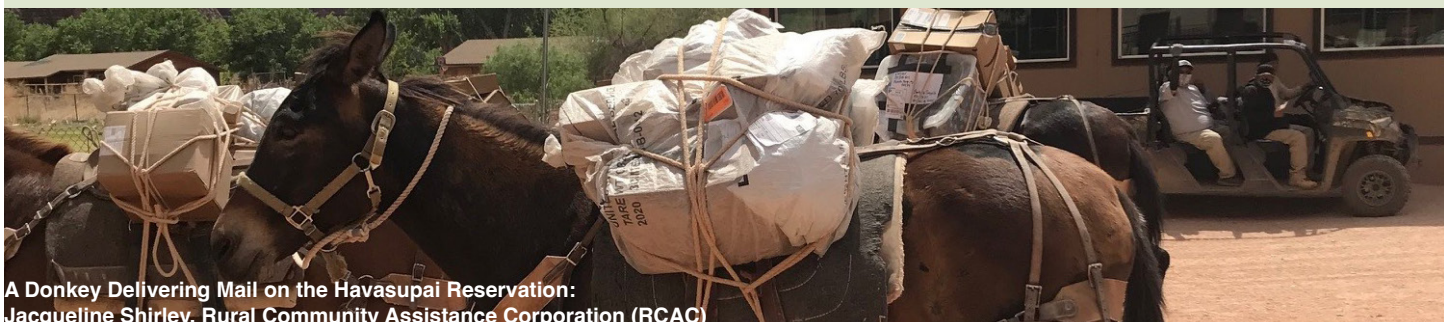
One of the main focuses of this EFC work is to help ensure Tribes can access funding from the Bipartisan Infrastructure Law (BIL) and to secure funding through the IHS and/ or other sources as applicable. The BIL provides the largest federal investment in water in the history of the United States, including over \$50 billion in water infrastructure investments.

### EPA EFC Funding

Under EFC funding, RCAP will be working across the board on in-depth technical assistance (TA) projects focusing on Regionalization, Tribal communities, private well and unsewered communities, non-traditional systems (such as manufactured housing communities, schools, and other non-community systems), lead, emerging contaminants such as PFAS, and stormwater. Projects must be small, rural or Tribal communities (less than 10,000 people).

### Technical Assistance (TA)

RCAP can assist Tribal communities in accessing funding from start to finish - getting communities through the phases of planning, pre-development, submitting all required materials to access infrastructure funding, managing construction projects, setting up for ongoing operational success, and repayment/affordability. On the next page is a sample list of TA tasks RCAP can provide support with.



A Donkey Delivering Mail on the Havasupai Reservation:  
Jacqueline Shirley, Rural Community Assistance Corporation (RCAP)

## RCAP TA Services and Training for Project Development:

- Collaborate with Tribe and Tribal leaders to develop a vision to enhance and create a shared concept of dependable and resilient utility service delivery
- Facilitate discussions on regionalization and regional solutions to environment quality, business planning to enhance community growth, and the infrastructure needs associated
- Project planning, pre-development and management
- Assistance exploring asset management, mapping of assets, and capital improvement planning and funding
- Support meeting loan and grant conditions, permitting, and repayment
- Evaluation of utility operation and maintenance (O&M) capacity and forecasts of O&M requirements to increase the reliability of the water and/or waste systems
- Provide education and assistance with financial records to ensure operation and other anticipated costs are met
- Operations and Maintenance budget development focused on adequate utility management
- Conducting rate studies and cost analyses to identify revenue sources
- Analyze and update utility governance by-laws and provide training to utility staff and Tribal Councils as needed
- Individualized Tribal utility leadership development
- Training focused on relationship building and negotiations with primacy and funding agencies such as USDA
- Reviewing preliminary engineering reports, conducting environmental assessments and other project-specific supporting documentation
- Helping to provide customer education and getting buy in from Tribal utility stakeholders to understand the value of services and how they can help
- Technical, managerial, and financial capacity-building assistance that will help Tribes become shovel-ready and be able to access and manage Bipartisan Infrastructure Law and other infrastructure dollars

RCAP would like to meet with you and our local RCAP regional partners to discuss the needs of the Tribes in your area and how we can use our EFC funds to help. If Tribes have needs outside of this scope, though, RCAP may be able to help them through other funding sources for TA.

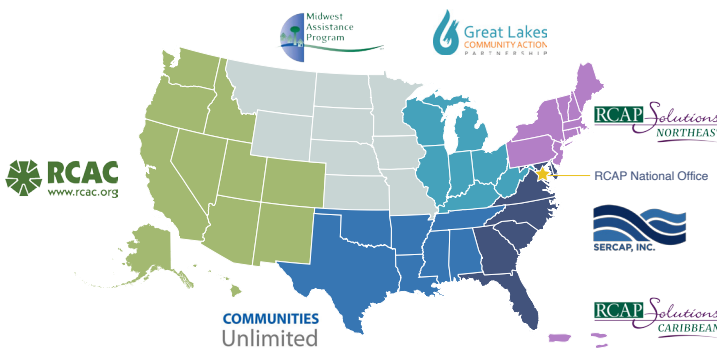
### Contact Information

**Sarah Buck | Chief Programs Officer**  
sbuck@rcap.org

**Jodi Hilsabeck | Senior Environmental Program Coordinator - RCAP EFC Lead**  
jhilsabeck@rcap.org

## Our Network of Regional Partners

**RCAP** Rural Community Assistance Partnership



**Western RCAP**  
Rural Community Assistance Corporation (RCAC)  
(916) 447-2854  
www.rcac.org

**Great Lakes RCAP**  
Great Lakes Community Action Partnership (GLCAP)  
(800) 775-9767  
www.gllrcap.org

**Midwestern RCAP**  
Midwest Assistance Program (MAP)  
(660) 562-2575  
www.map-inc.org

**Northeastern and Caribbean RCAP**  
RCAP Solutions (RSOL)  
(800) 488-1969  
www.rcapsolutions.org

**Southern RCAP**  
Communities Unlimited (CU)  
(479) 443-2700  
www.communitiesu.org

**Southeastern RCAP**  
Southeast Rural Community Assistance Project (SERCAP)  
(866) 928-3731  
www.sercap.org